

AY Etiket Ambalaj

san. ve tic. Ltd. Őti.

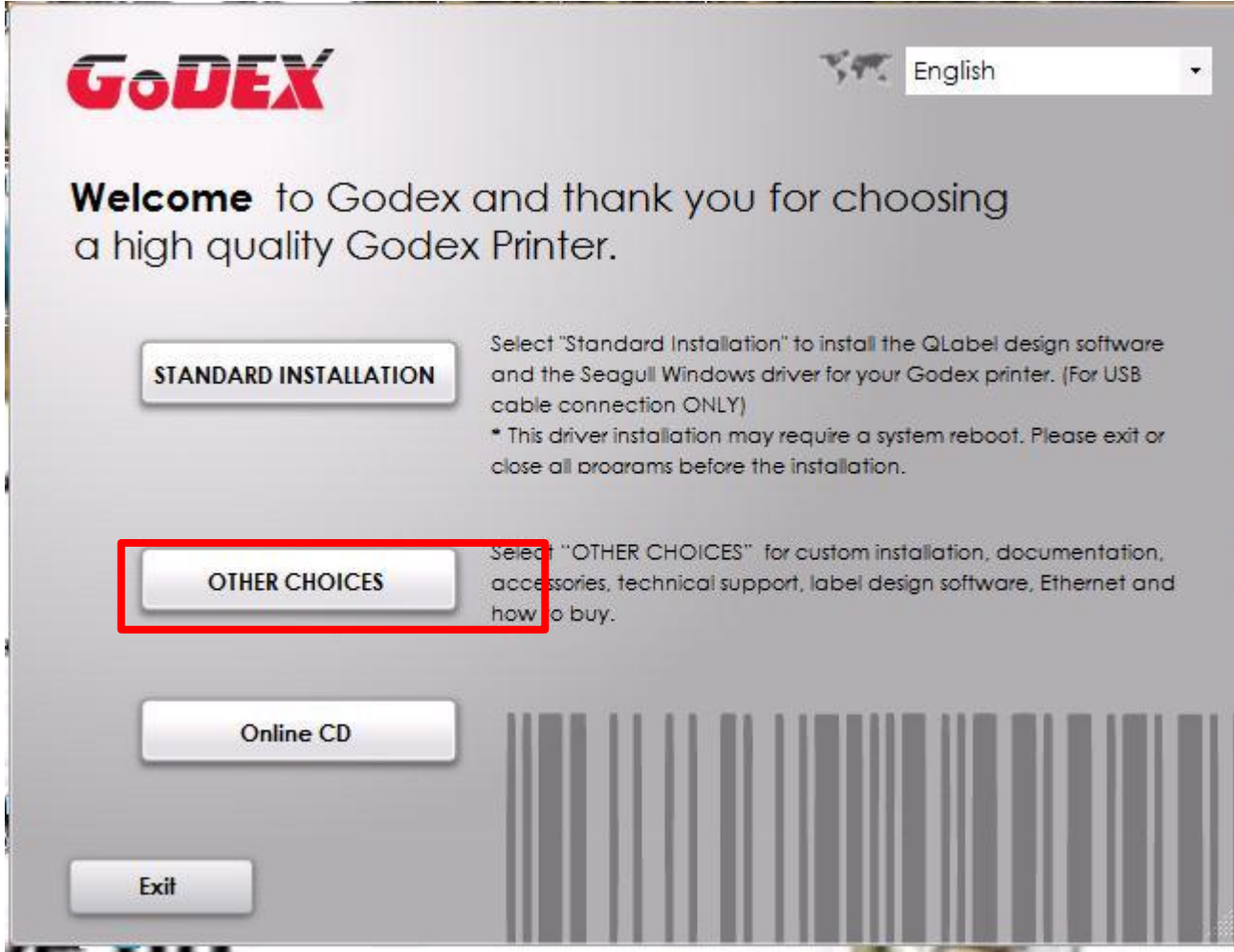
GODEX EZ1100 PLUS Yazıcı Driver Kurulum Ayarları Anlatımı.
01/01/2017

Teknik destek için:

Tel : 0212-674 83 45

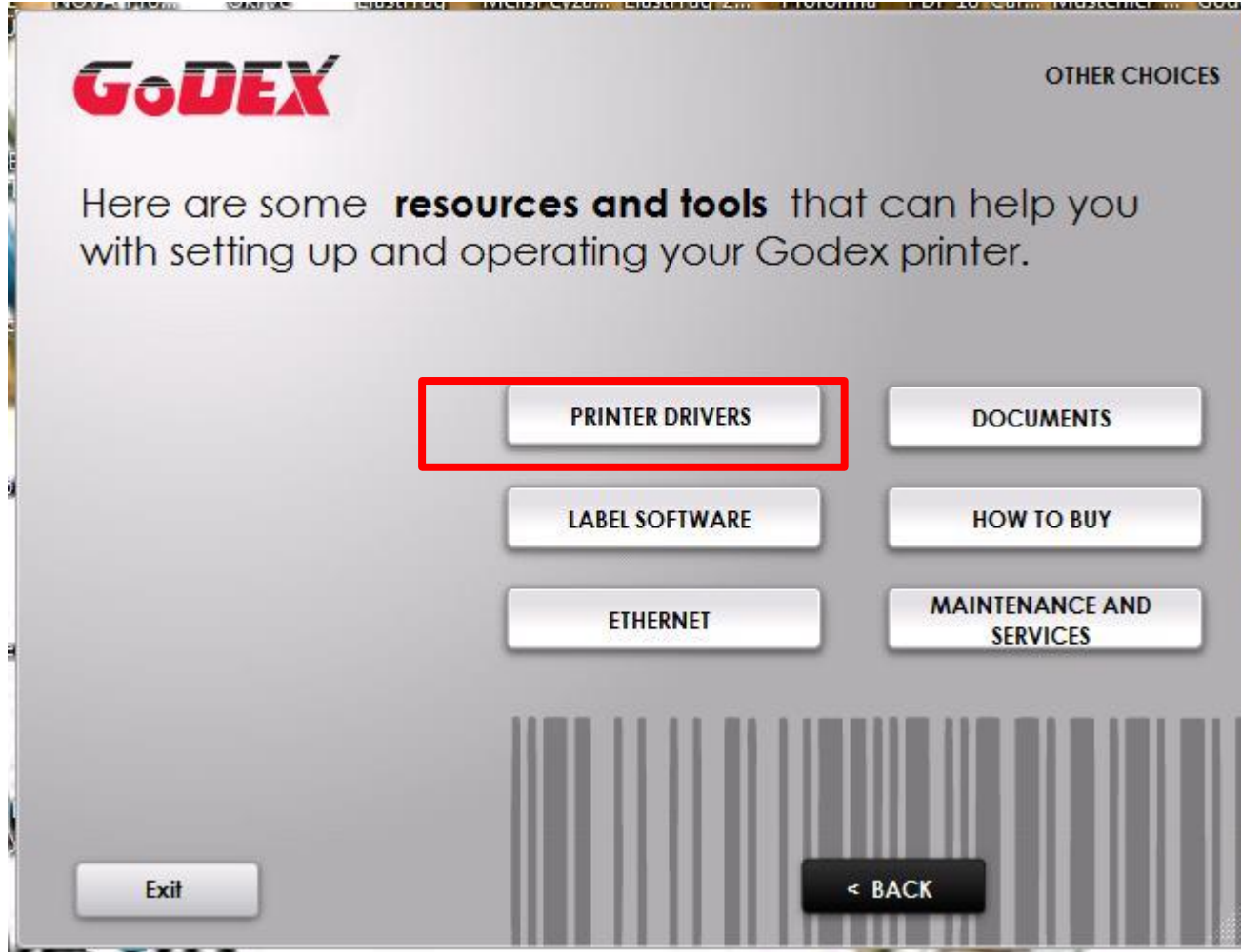
Tel : 0212-674 83 50

Godex Ez110 Plus Driver Kurulumu- Lütfen işaretli yerleri izleyiniz.



Godex Ez110 Plus Driver Kurulumu sonrası yazıcınızı bilgisayara bağlayınız.Yeni donanım bulundu sihirbazi başlayacak ve kurulum tamamlanacaktır.

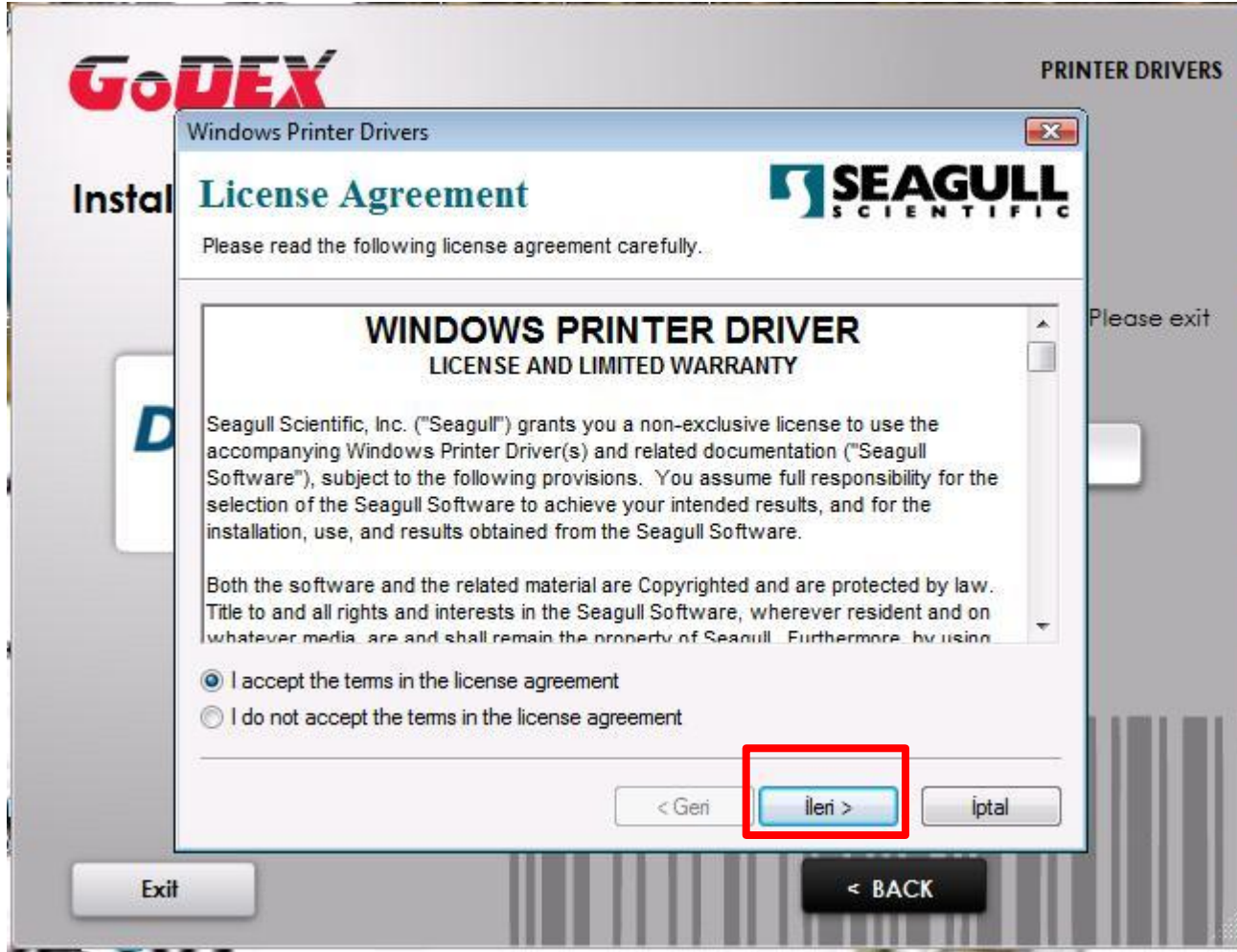
Godex Ez110 Plus Driver Kurulumu- Lütfen işaretli yerleri izleyiniz.



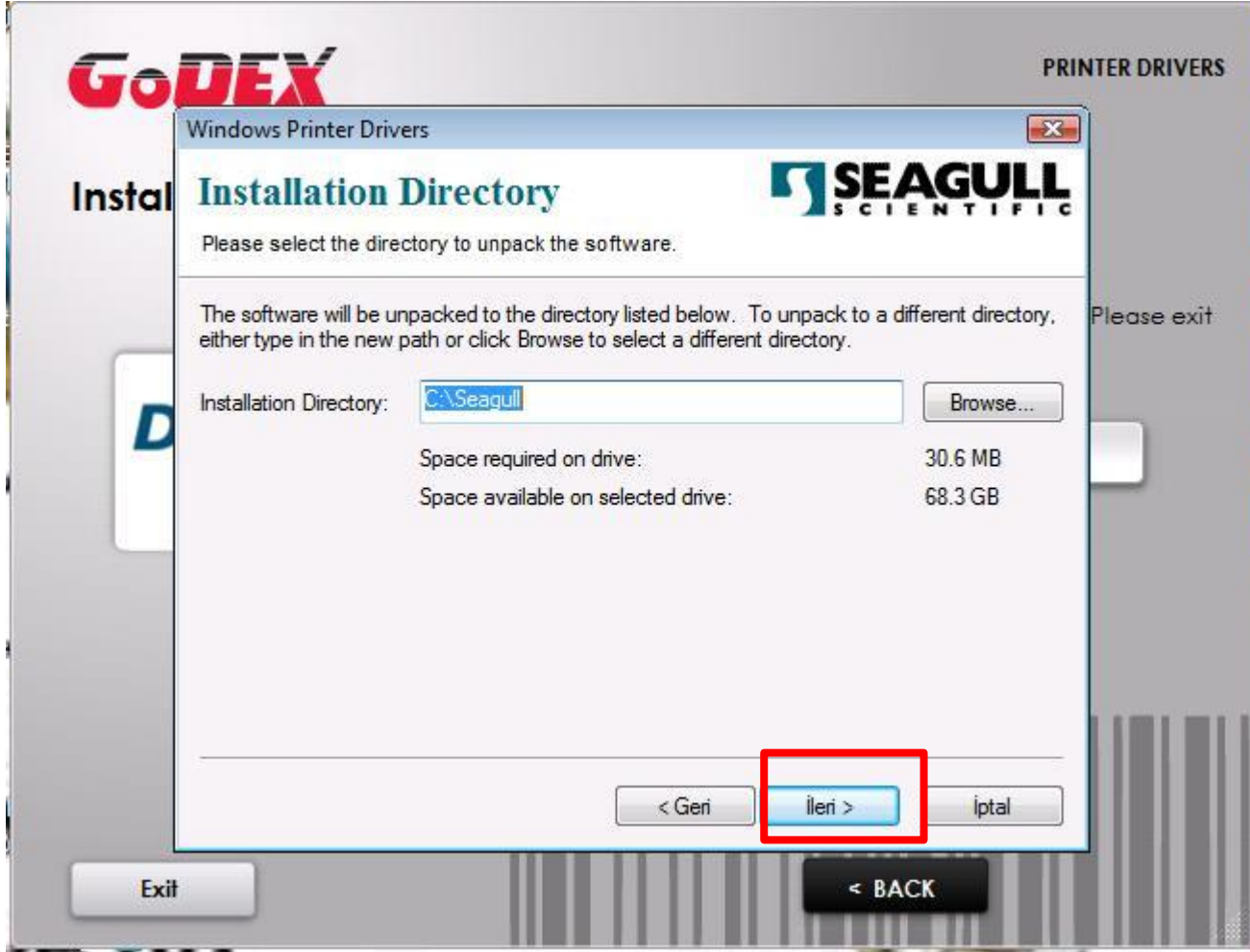
Godex Ez110 Plus Driver Kurulumu- Lütfen işaretli yerleri izleyiniz.



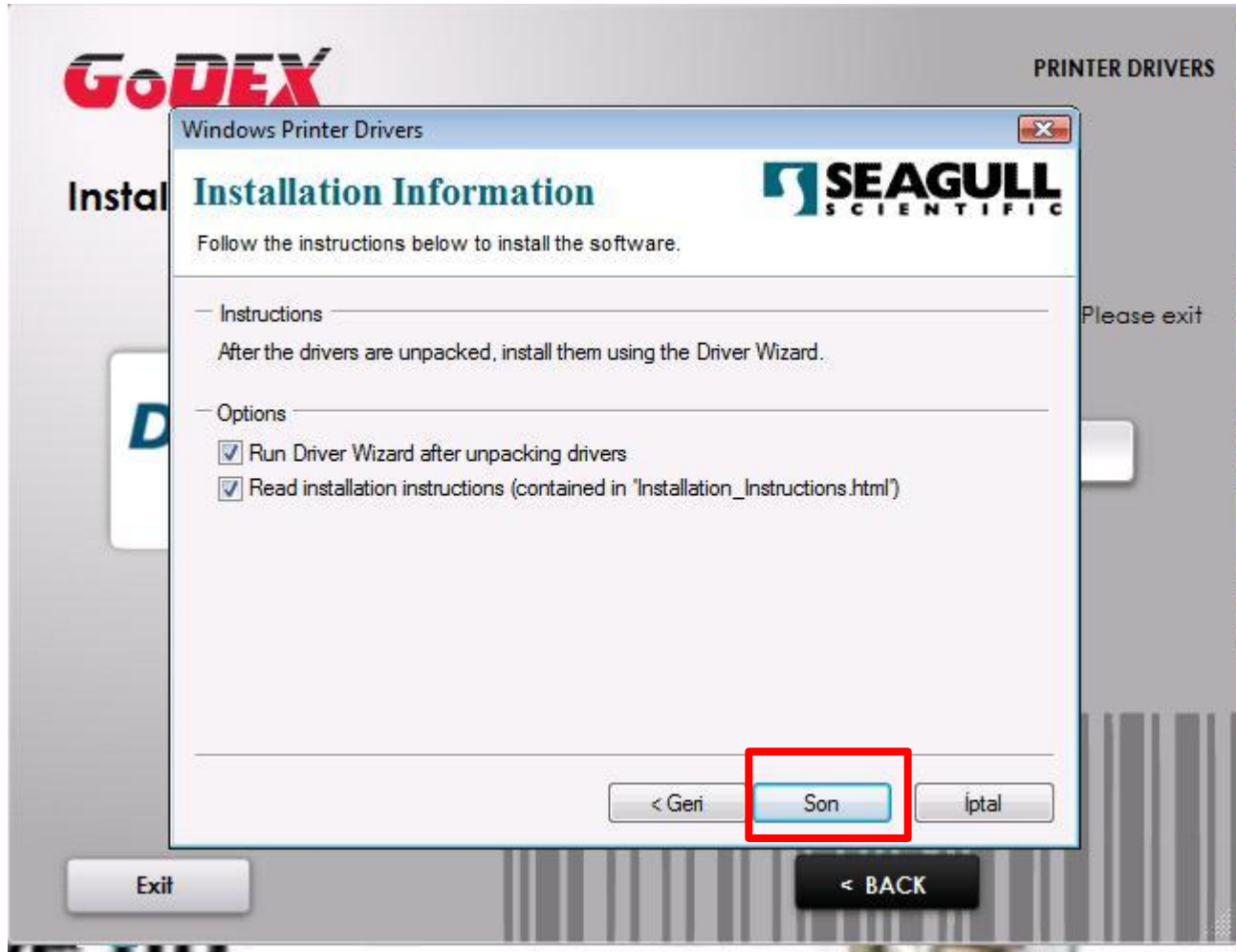
Godex Ez110 Plus Driver Kurulumu- Lütfen işaretli yerleri izleyiniz.



Godex Ez110 Plus Driver Kurulumu- Lütfen işaretli yerleri izleyiniz.



Godex Ez110 Plus Driver Kurulumu- Lütfen işaretli yerleri izleyiniz.



Godex Ez110 Plus Driver Kurulumu- Lütfen işaretli yerleri izleyiniz.

Installing Windows Printer Drivers

Contents

- [Introduction](#)
- [Installation Instructions](#)
- [Upgrading Printer Drivers](#)
- [Removing Printer Drivers](#)
- [Troubleshooting Printing Problems](#)

Introduction

This document will help you install your Windows printer drivers. Once the document is installed, it also includes a thorough troubleshooting section.

The drivers include the DriverWizard utility which can install, remove, and upgrade printer drivers properly.

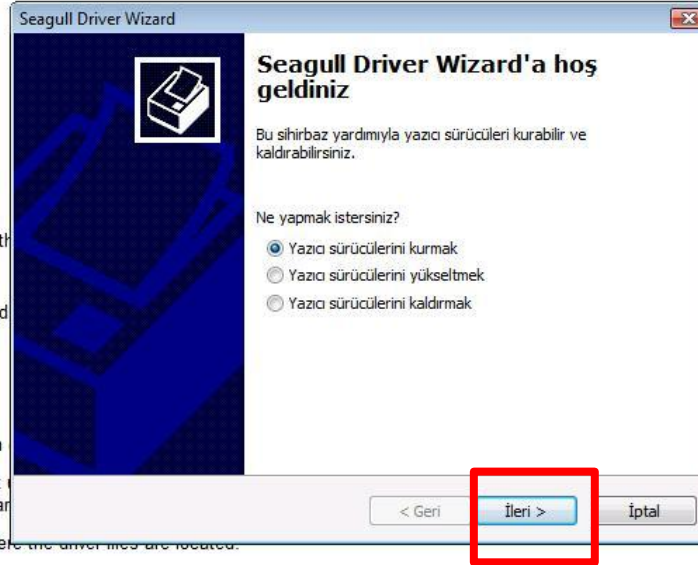
Installation Instructions

1. Turn off the printer, connect the appropriate cable, and then turn it on.
2. If the printer supports Plug-and-Play, and you have connected it properly, Windows will automatically detect the printer and display a dialog that allows you to install a driver. Click **Cancel** and do not install the driver using this wizard.
3. Run the DriverWizard utility from the **Installation Directory** where the driver files are located.
4. Select **Install Printer Drivers** and complete the wizard.
5. The driver should now be installed.

Upgrading Printer Drivers

DriverWizard should be used to upgrade existing printers. Using the Add Printer Wizard to upgrade existing drivers is not recommended; it may not upgrade all driver files correctly, leaving the driver in a corrupted state.

1. Run the DriverWizard utility from the **Installation Directory** where the driver files are located.



Godex Ez110 Plus Driver Kurulumu- Lütfen işaretli yerleri izleyiniz. Godex Ez-1100Plus seçiniz

Installing Windows Printer Drivers

Contents

- [Introduction](#)
- [Installation Instructions](#)
- [Upgrading Printer Drivers](#)
- [Removing Printer Drivers](#)
- [Troubleshooting Printing Problems](#)

Introduction

This document will help you install your Windows printer drivers. Once the document is installed, it also includes a thorough troubleshooting section.

The drivers include the DriverWizard utility which can install, remove, and update printer drivers properly.

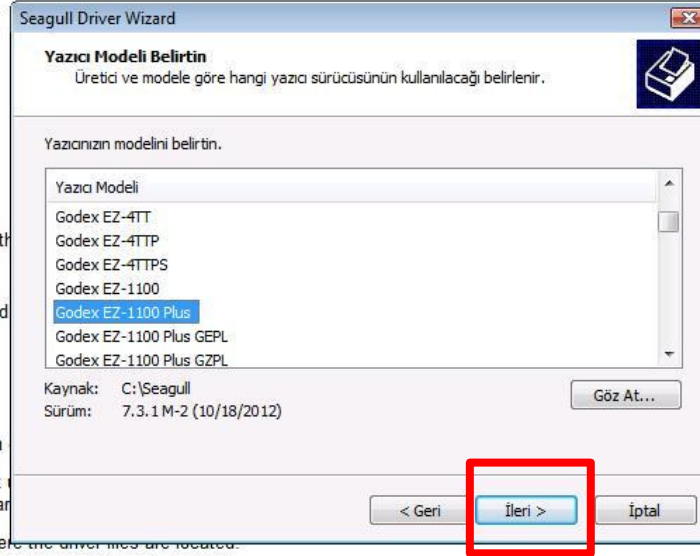
Installation Instructions

1. Turn off the printer, connect the appropriate cable, and then turn it on.
2. If the printer supports Plug-and-Play, and you have connected it properly, click **Cancel** and do not install the driver using this wizard.
3. Run the DriverWizard utility from the **Installation Directory** where the driver files are located.
4. Select **Install Printer Drivers** and complete the wizard.
5. The driver should now be installed.

Upgrading Printer Drivers

DriverWizard should be used to upgrade existing printers. Using the Add Printer Wizard to upgrade existing drivers is not recommended; it may not upgrade all driver files correctly, leaving the driver in a corrupted state.

1. Run the DriverWizard utility from the **Installation Directory** where the driver files are located.



Godex Ez110 Plus Driver Kurulumu- Lütfen işaretli yerleri izleyiniz.

Installing Windows Printer Drivers

Contents

- [Introduction](#)
- [Installation Instructions](#)
- [Upgrading Printer Drivers](#)
- [Removing Printer Drivers](#)
- [Troubleshooting Printing Problems](#)

Introduction

This document will help you install your Windows printer drivers. Once the document is installed, it also includes a thorough troubleshooting section.

The drivers include the DriverWizard utility which can install, remove, and upgrade printer drivers properly.

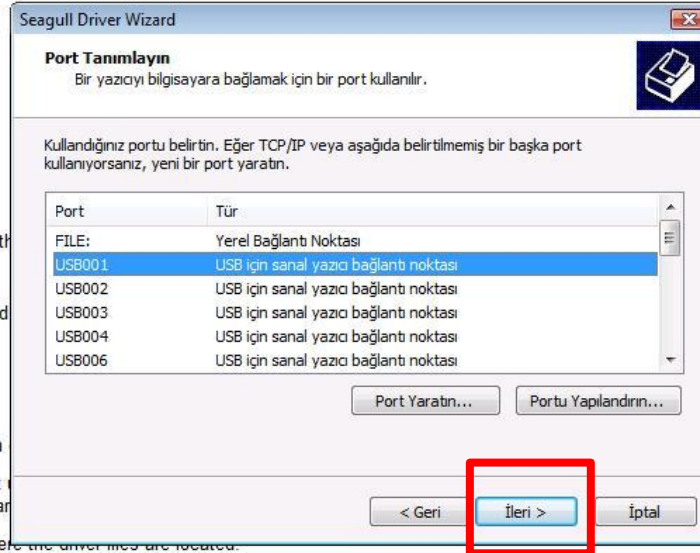
Installation Instructions

1. Turn off the printer, connect the appropriate cable, and then turn it on.
2. If the printer supports Plug-and-Play, and you have connected it properly, click **Cancel** and do not install the driver using this wizard.
3. Run the DriverWizard utility from the **Installation Directory** where the driver files are located.
4. Select **Install Printer Drivers** and complete the wizard.
5. The driver should now be installed.

Upgrading Printer Drivers

DriverWizard should be used to upgrade existing printers. Using the Add Printer Wizard to upgrade existing drivers is not recommended; it may not upgrade all driver files correctly, leaving the driver in a corrupted state.

1. Run the DriverWizard utility from the **Installation Directory** where the driver files are located.



Godex Ez110 Plus Driver Kurulumu- Lütfen işaretli yerleri izleyiniz.

Installing Windows Printer Drivers

Contents

- [Introduction](#)
- [Installation Instructions](#)
- [Upgrading Printer Drivers](#)
- [Removing Printer Drivers](#)
- [Troubleshooting Printing Problems](#)

Introduction

This document will help you install your Windows printer drivers. Once the installation is complete, you can find the most commonly asked questions regarding the drivers. The help file also includes a thorough troubleshooting section.

The drivers include the DriverWizard utility which can install, remove, and upgrade printer drivers properly.

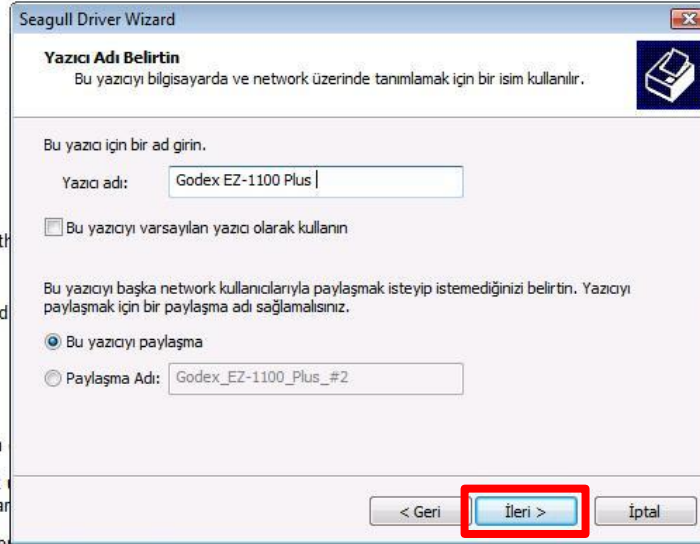
Installation Instructions

1. Turn off the printer, connect the appropriate cable, and then turn it on.
2. If the printer supports Plug-and-Play, and you have connected it properly, Windows will automatically install the driver. Click **Cancel** and do not install the driver using this wizard.
3. Run the DriverWizard utility from the [Installation Directory](#) where the driver files are located.
4. Select **Install Printer Drivers** and complete the wizard.
5. The driver should now be installed.

Upgrading Printer Drivers

DriverWizard should be used to upgrade existing printers. Using the Add Printer Wizard to upgrade existing drivers is not recommended; it may not upgrade all driver files correctly, leaving the driver in a corrupted state.

1. Run the DriverWizard utility from the [Installation Directory](#) where the driver files are located.



Godex Ez110 Plus Driver Kurulumu- Lütfen işaretli yerleri izleyiniz.

Installing Windows Printer Drivers

Contents

- [Introduction](#)
- [Installation Instructions](#)
- [Upgrading Printer Drivers](#)
- [Removing Printer Drivers](#)
- [Troubleshooting Printing Problems](#)

Introduction

This document will help you install your Windows printer drivers. Once the document is installed, it also includes a thorough troubleshooting section.

The drivers include the DriverWizard utility which can install, remove, and upgrade printer drivers properly.

Installation Instructions

1. Turn off the printer, connect the appropriate cable, and then turn it on.
2. If the printer supports Plug-and-Play, and you have connected it to the computer, click **Cancel** and do not install the driver using this wizard.
3. Run the DriverWizard utility from the **Installation Directory** where the driver files are located.
4. Select **Install Printer Drivers** and complete the wizard.
5. The driver should now be installed.

Upgrading Printer Drivers

DriverWizard should be used to upgrade existing printers. Using the Add Printer Wizard to upgrade existing drivers is not recommended; it may not upgrade all driver files correctly, leaving the driver in a corrupted state.

1. Run the DriverWizard utility from the **Installation Directory** where the driver files are located.



most commonly asked questions regarding the drivers. The help file

the standard Add Printer Wizard does not always upgrade existing

ly detect the printer and display a dialog that allows you to install a

Godex Ez110 Plus Driver Kurulumu- Lütfen işaretli yerleri izleyiniz.

Installing Windows Printer Drivers

Contents

- [Introduction](#)
- [Installation Instructions](#)
- [Upgrading Printer Drivers](#)
- [Removing Printer Drivers](#)
- [Troubleshooting Printing Problems](#)

Introduction

This document will help you install your Windows printer drivers. Once the installation is complete, you will be able to print. This document also includes a thorough troubleshooting section.

The drivers include the DriverWizard utility which can install, remove, and upgrade printer drivers properly.

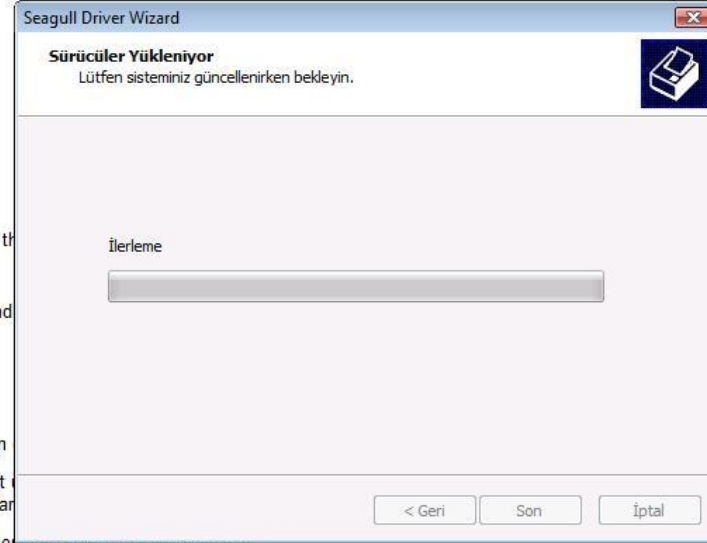
Installation Instructions

1. Turn off the printer, connect the appropriate cable, and then turn the printer on.
2. If the printer supports Plug-and-Play, and you have connected it properly, Windows will automatically install the driver. Click **Cancel** and do not install the driver using this wizard.
3. Run the DriverWizard utility from the **Installation Directory** where the driver files are located.
4. Select **Install Printer Drivers** and complete the wizard.
5. The driver should now be installed.

Upgrading Printer Drivers

DriverWizard should be used to upgrade existing printers. Using the Add Printer Wizard to upgrade existing drivers is not recommended; it may not upgrade all driver files correctly, leaving the driver in a corrupted state.

1. Run the DriverWizard utility from the **Installation Directory** where the driver files are located.



most commonly asked questions regarding the drivers. The help file

the standard Add Printer Wizard does not always upgrade existing

ly detect the printer and display a dialog that allows you to install a